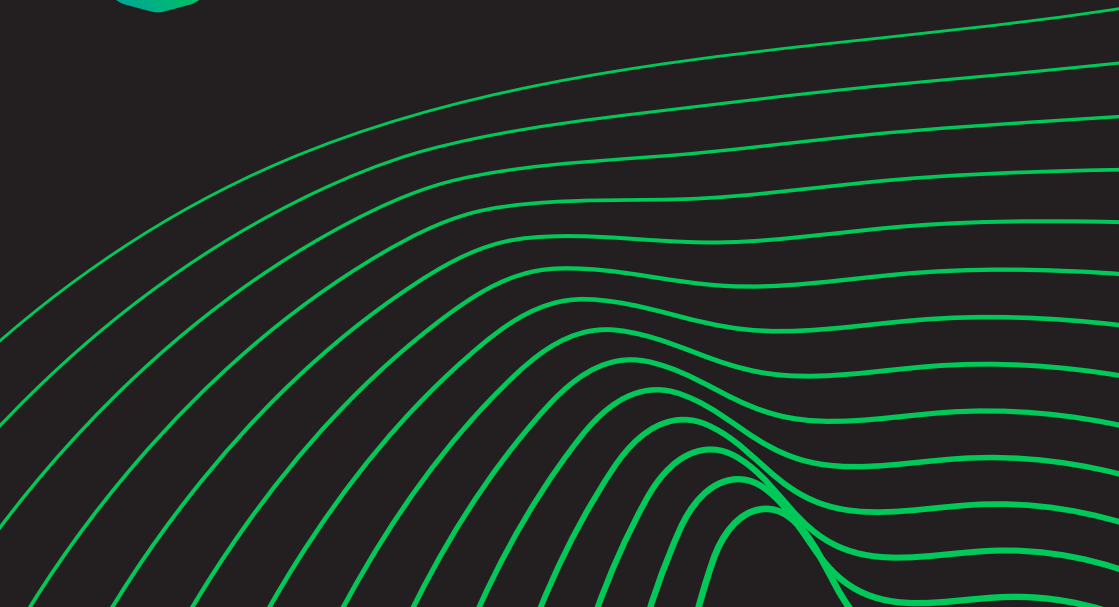


Powering Brain Research Together



EBRAINS



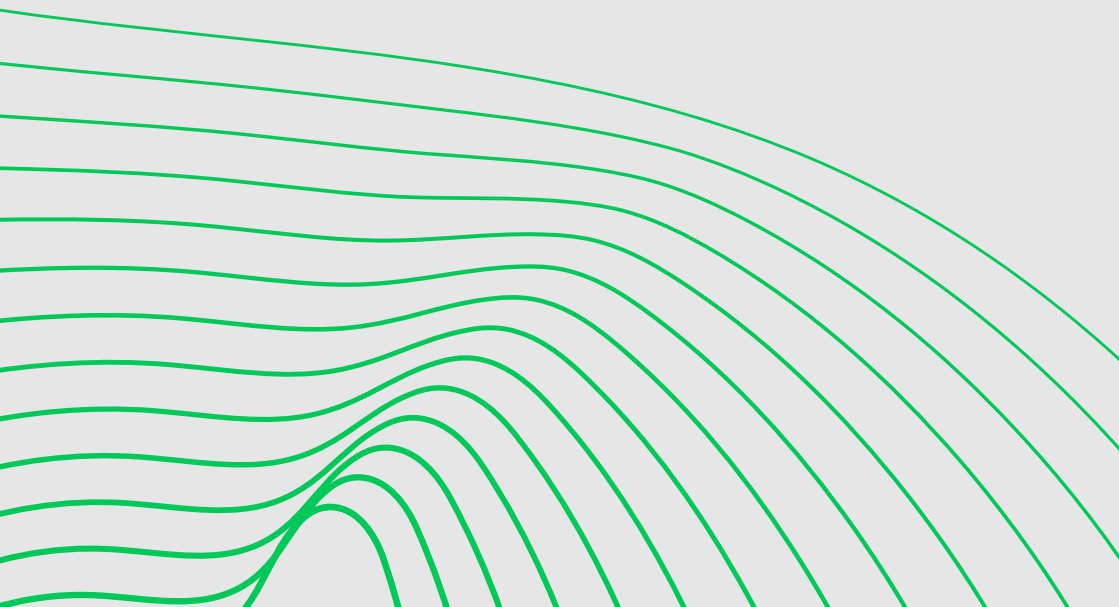
'Decoding the human brain is one of the most challenging scientific endeavours of the 21st century.

With about 86 billion neurons in the adult human brain, and approximately the same number of non-neuronal cells, the complexity of the task is daunting. At this point in time, however, unprecedented technological and IT means are being put at the disposal of brain research. Not long ago, neuroscientists were only able to study single neurons. Today, they can examine entire populations of neurons in different brain regions over long behaviours.

This opens unique opportunities to help broaden our understanding of the healthy brain and dysfunctions.

EBRAINS was created with this goal in mind. It is now leveraging the most advanced European ICT to advance brain science and tackle societal challenges in a multidisciplinary manner.'

Paweł Świeboda
EBRAINS CEO



EBRAINS is a digital Research Infrastructure (RI), created by the EU-funded Human Brain Project (HBP), that gathers an extensive range of data and tools for brain-related research. It draws on cutting-edge neuroscience, big data, computing, robotics, and related technologies to help translate the latest scientific discoveries into innovation in medicine and industry, for the benefit of patients and society.

Our ambition is to provide the scientific community at large with an open state-of-the-art capability that fosters collaborative brain science, opens the way to ground-breaking discoveries and aims to secure Europe's leading position in the dynamically growing field of multidisciplinary brain research and its exploitation.

EBRAINS AISBL (Association Internationale Sans But Lucratif) was founded in Brussels in 2019 as an international non-profit association. Its objective is to promote research and innovation in the field of brain science, in particular through the creation and operation of a European-led, cutting-edge, ICT-based scientific and medical research infrastructure. The EBRAINS RI supports brain research and related translational activities, which include both clinical and brain-inspired technologies.

The Association aims to further co-develop the tools and services provided by its Research Infrastructure, making it adaptable and flexible by catalysing the community effort. **The AISBL acts as a Central Hub that coordinates a pan-European distributed network of services delivered through National Nodes.**

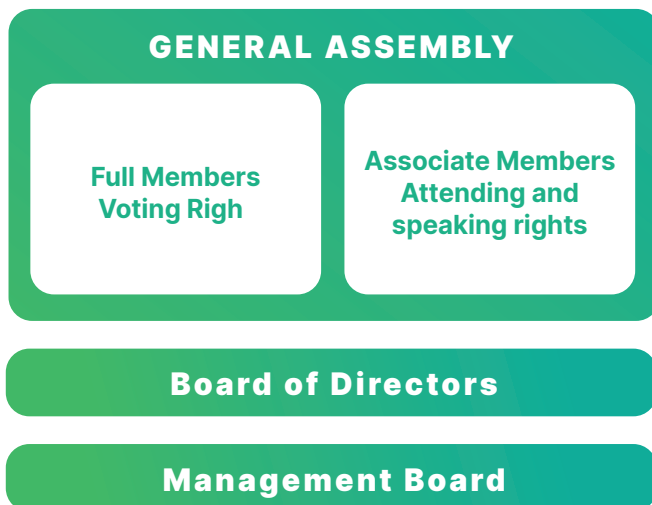
It is a firm commitment of EBRAINS to work with organisations across Europe to continue and support researchers to leverage, develop, and integrate existing and new solutions to the data and service ecosystem. This effort has been recognised by the European Strategy Forum on Research Infrastructures (ESFRI) which, as of 30 June 2021, **included EBRAINS on the ESFRI Roadmap 2021, list of Europe's top science facilities.**

A pan-European membership platform

The EBRAINS RI is only possible as a European-level undertaking, combining national perspectives and scientific contributions. The RI enables overcoming the fragmentation of research efforts, as well as fostering greater coordination and cooperation between brain research stakeholders. As a distributed infrastructure, EBRAINS aims to build on the best of the national efforts through establishment of the National Nodes.

Each National Node will be in principle led by one institution with the status of a Full Member¹. The other National Node partners (e.g. legal entities such as universities, research institutes, or private organisations) are strongly encouraged to become Associate Members of the AISBL.

EBRAINS GOVERNING BODIES



1. Eligible countries are: European Union Member States, associated countries linked to the EU Framework programme, Israel, Turkey, Switzerland and the UK.

Why become a Full Member of EBRAINS AISBL ?

There are three important arguments for joining EBRAINS AISBL as a Full Member.

Firstly, this is the pathway towards influence over the nature and architecture of the Research Infrastructure that EBRAINS is building, including the selection of services and curation of its functionalities.

Secondly, Full Members will have the possibility of offering services on the platform, hence ensuring growing interest in the outcome of their research, and allowing for their continued development.

Thirdly, Full Members will be in the position to influence the funding strategy of EBRAINS by being actively consulted for the development of new project consortia built around the use of the Research Infrastructure.

Being a Full Member of EBRAINS AISBL will allow institutions to:

GOVERNANCE ASPECTS

- Vote in the General Assembly, the ultimate decision-making body of EBRAINS, being represented in meetings by one duly authorised person (“Member Representative”)
- Receive regular monthly and ad-hoc contextualised information from the Management Board and the Board of Directors

ADVOCACY ASPECTS

- Receive support in influencing and advising policy makers, funders and regulators in favour of a common brain research and brain health agenda, including accompanying funding instruments

FUNDING AND POSITIONING ASPECTS

- Receive support in bids to position their Node on the national infrastructure roadmaps
- Co-lead and develop new consortia built around EBRAINS for the advancement of brain research and related disciplines
- Gain visibility and exposure through the EBRAINS web portal and social media presence
- Use the EBRAINS brand to promote research infrastructure services or activities which are part of the RI, or to request national funding

SYNERGY ASPECTS

- Participate in all scientific workshops and sessions of the Association
- Become involved in partnerships and collaborations with other research initiatives, in Europe and globally

RI ASPECTS

- Play a leading role at the national level by coordinating the National Node, creating a strong scientific network, and a dynamic and cohesive local brain research environment
- Participate in the determination of services to be offered as part of the RI and of the conditions for access to services
- Offer services as part of EBRAINS, provided such services meet the defined parameters of its Research Infrastructure
- Gain access to a large and active community of users and interested parties that can use their services, tools, or research results
- Receive a quality stamp to the RI services they provide

Why become an Associate Member of EBRAINS AISBL ?

There are three important arguments for joining EBRAINS AISBL as an Associate Member.

Firstly, this is the opportunity to follow closely the development of the Research Infrastructure.

Secondly, Associate Members will have the possibility of proposing services for consideration on the platform, hence ensuring growing interest in the outcome of their research and allowing for their continued development.

Thirdly, Associate Members may cooperate with Full Members in developing new project consortia built around the use of the Research Infrastructure.

Being an Associate Member of EBRAINS AISBL will allow institutions to:

GOVERNANCE ASPECTS

- Participate in the General Assembly, the ultimate decision-making body of EBRAINS, being represented in meetings by one duly authorised person (“Member Representative”)
- Receive quarterly contextualised information from the Board of Directors through a designated mechanism for Members

SYNERGY ASPECTS

- Participate through one representative in specific scientific workshops and sessions organised by EBRAINS AISBL

RI ASPECTS

- Have the possibility to join a National Node thereby benefiting from a stronger national brain science network while contributing to the presence of EBRAINS on the national research and innovation agenda
- Be consulted on the architecture of the RI (strategy, architecture, new Nodes, new services) and its business model
- Apply to make their services available on EBRAINS, provided they meet the defined parameters of the Research Infrastructure

FUNDING AND POSITIONING ASPECTS

- Use the EBRAINS brand to promote research infrastructure services or activities which are part of the RI, or to request national or international funding

Admission process for Full Members and Associate Members

1. The application for admission as (Full/Associate) Member to EBRAINS AISBL must be made in writing to the Board of Directors. The application can be sent for the attention of the Board of Directors via e-mail to the CEO or via regular mail
2. The Board of Directors informs existing Full and Associate Members of applications received for new (Full/Associate) Membership. The Full and Associate Members have the right to provide their observations to the CEO within a period of 30 days after having received the notification
3. The Board of Directors considers the observations received from the Full and Associate Members and decides on accepting membership applications
4. After approval of the membership, the applicants will receive a statement from the CEO admitting them as (Full/Associate) Member

Membership Fees

The annual Membership Fee is decided by the General Assembly on a yearly basis based on a Board of Directors' proposal. For the calendar year 2022 (and indicatively for 2023), the membership fees amount to:

- Full Members: 100,000 EUR
- Associate Members: 5,000 EUR (special EBRAINS AISBL launching rate)

EBRAINS AISBL is open to engage in close dialogue about the nature of membership that would be best suited for each Partner interested in joining us in the common journey to improve our knowledge of the brain. It can also provide any additional information about the Research Infrastructure we are building, its constituent parts and access policy.

Contact Details

Paweł Świeboda

EBRAINS AISBL

CEO

pawel.swieboda@ebrains.eu

Edith Euan-Diaz

EBRAINS AISBL

Advisor to the CEO on Research Infrastructure Policy

edith.euan-diaz@ebrains.eu

EBRAINS, International Non-Profit Association

Chaussée de la Hulpe 166, "Glaverbel", 1st floor, Section b, 1170 Brussels, Belgium

Company registration number 0740.908.863 - VAT BE 0740.908.863

Banque/bank/bank account: IBAN: BE31 7360 6257 3855-BIC: KREDBEBB

© EBRAINS 2022



EBRAINS



**Co-funded by
the European Union**